

Raiser's Edge to Virtuous Mapping




How does my RE data change in Virtuous?



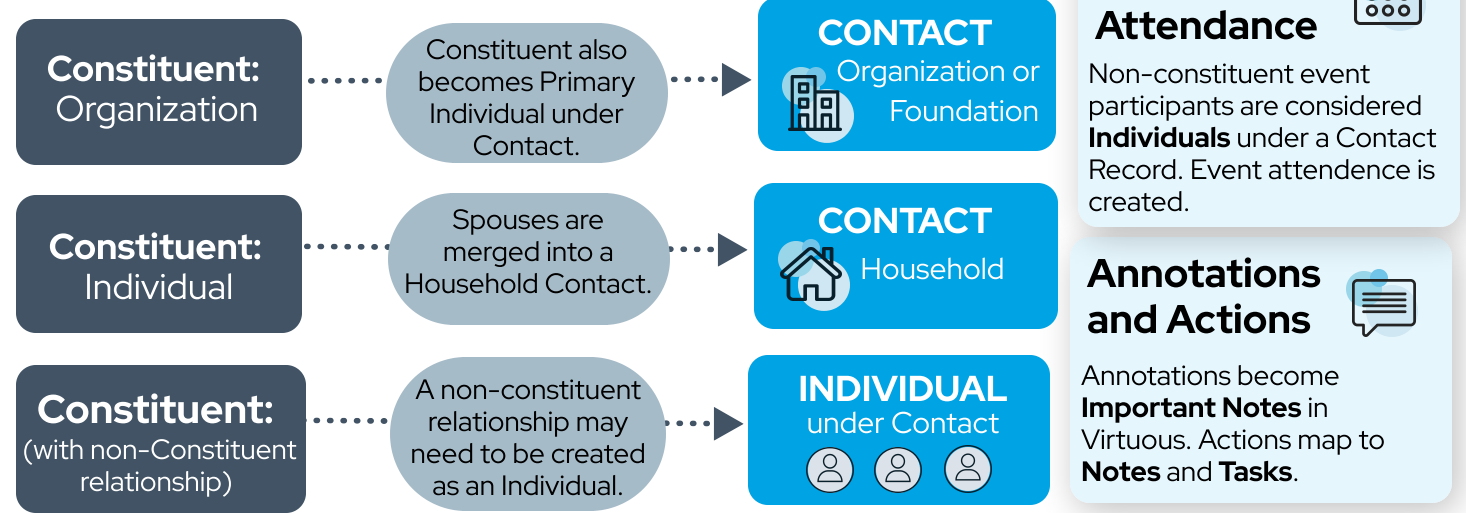
This diagram offers a visual overview on how your data is likely to map from Raiser's Edge to Virtuous.

KEY:



-  = RE Legacy Data
-  = how we transform the data
-  = corresponding Virtuous Data

Constituent Record



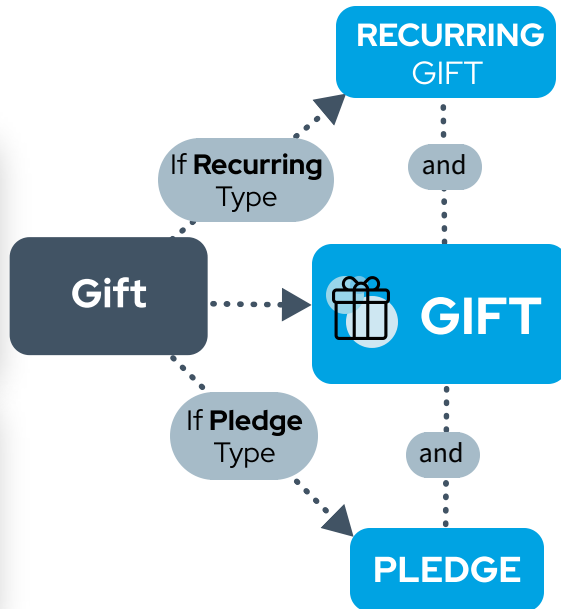
Gift Record

Soft Credits

Each Gift will have only one Soft Credit mapped to **Passthrough Giver** with options available for retaining remaining data.

Tributes

Each Gift will have only one **Tribute** mapped with options available for retaining remaining data.



Attributes

Attribute

Depending on the purpose of an Attribute, it may be mapped to:



Proposals

Proposal

If a Proposal is associated with a **foundation**:

If a Proposal is made to a **major donor**:



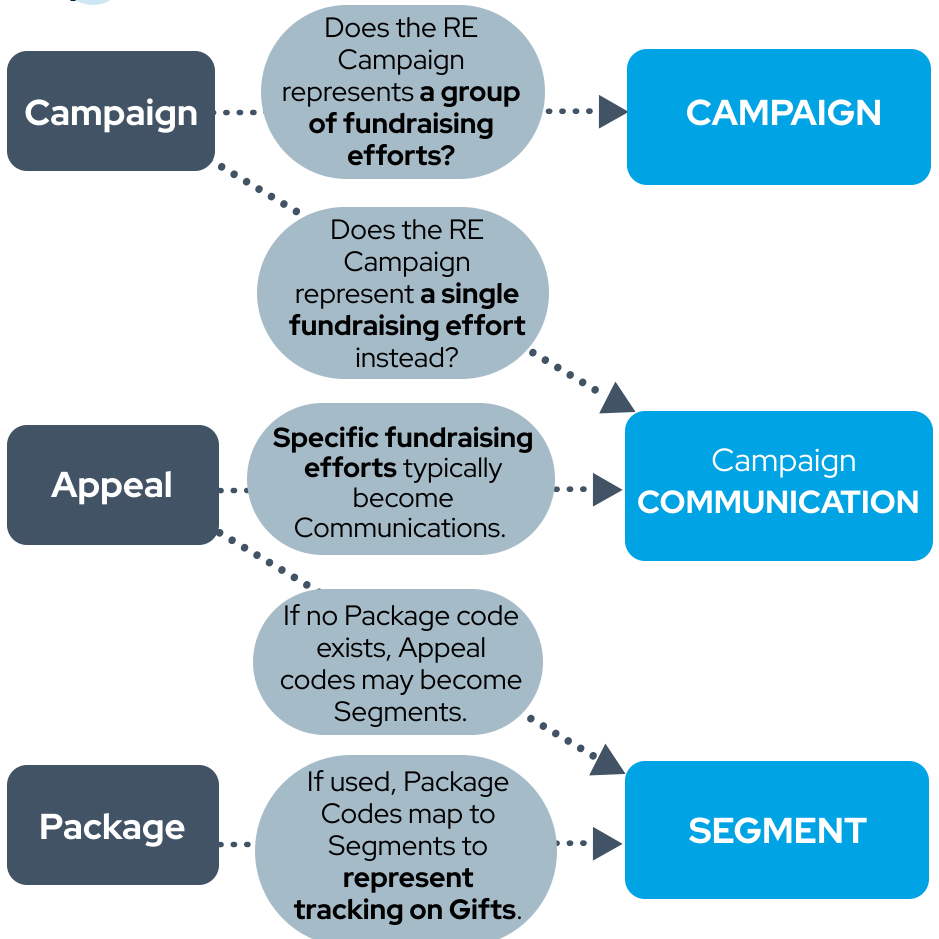
GRANT



GIFT ASK



Campaign Record



Fund Record

Fund

Funds map to Projects in Virtuous if they reflect **how the money is being used**.



PROJECT

