

Raiser's Edge to Virtuous CRM+ Mapping




How does my RE data change in CRM+?



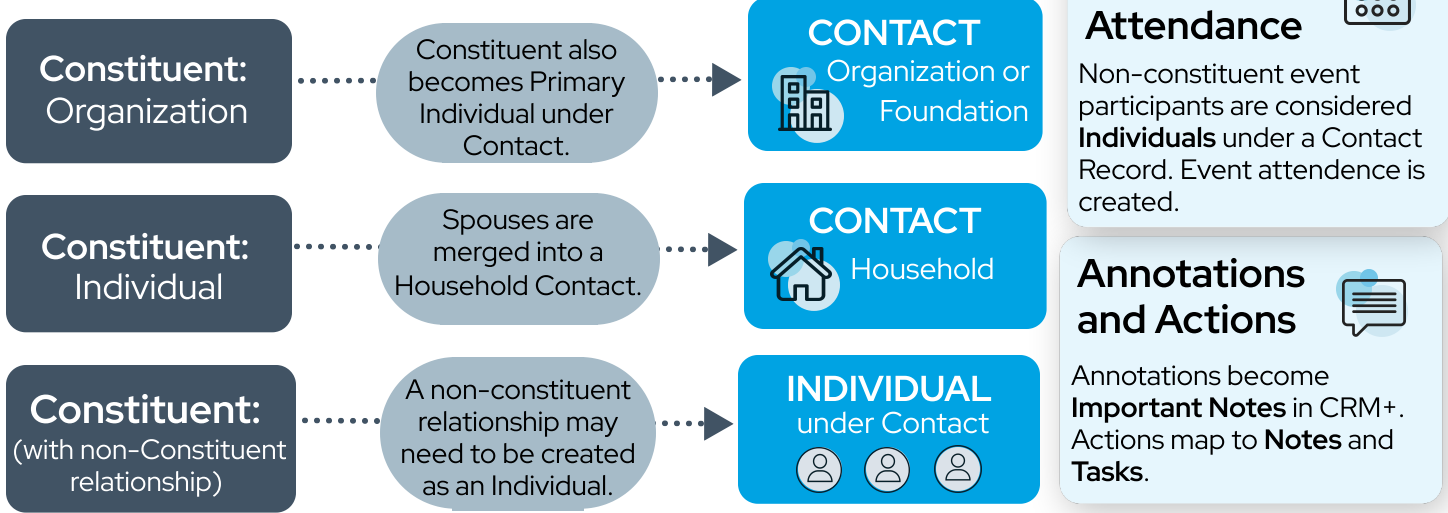
This diagram offers a visual overview on how your data is likely to map from Raiser's Edge to CRM+.

KEY:



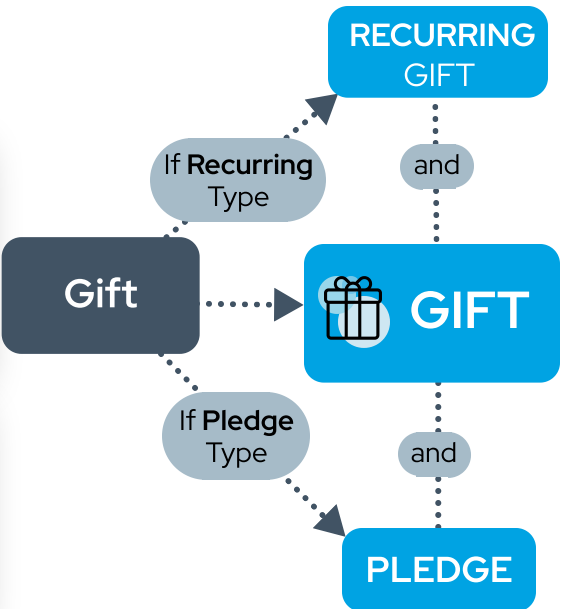
-  = RE Legacy Data
-  = how we transform the data
-  = corresponding CRM+ Data

Constituent Record

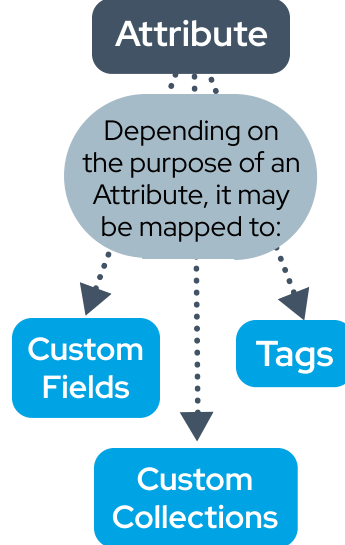


Gift Record

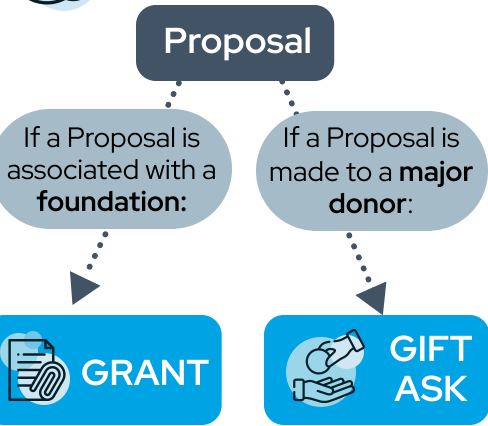
- Soft Credits**
Each Gift will have only one Soft Credit mapped to **Passthrough Giver** with options available for retaining remaining data.
- Tributes**
Each Gift will have only one **Tribute** mapped with options available for retaining remaining data.



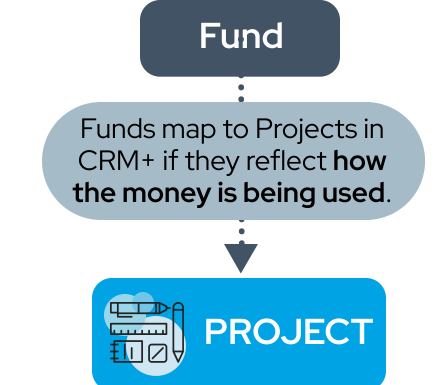
Attributes



Proposals



Fund Record



Campaign Record

